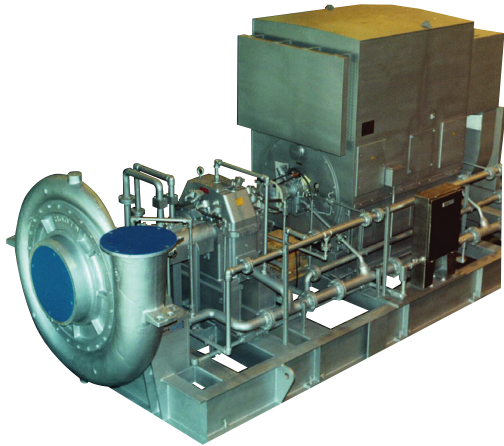


Overhung impeller with bearing housing

# ROOTS® OIB Compressor



**For further information contact:**

**ROOTS**  
900 W. Mount Street,  
Connersville, Indiana, 47331  
USA

**Tel:** +1 765 827 9200

**Web:** [www.RootsBlower.com](http://www.RootsBlower.com)

**ROOTS® OIB single-stage centrifugal compressors feature an overhung impeller arrangement with its own bearing housing to provide maximum design flexibility. This compressor is suitable for a variety of constant speed or variable speed drivers.**

Adjustable inlet guide vanes are generally used to control the capacity on a constant speed driver arrangement. Choices in materials of construction and impeller configurations are available to fit your specific application needs.

- Choice of impeller and casing materials of construction
- Polytropic heads to 42,000 ft.
- Flows from 5000 to 250000 cfm (8495 to 424753 m<sup>3</sup>/hr)
- API capability
- ROOTS Control packages

